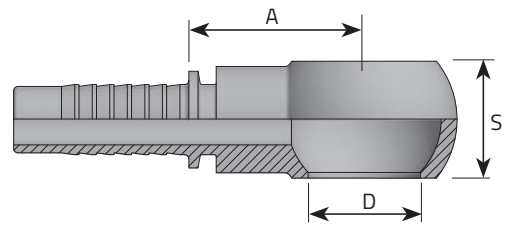


BSP BANJO (1)

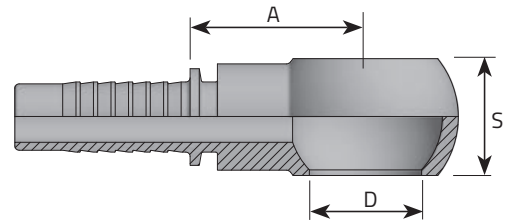
OCCHIO BSP
 BANJO VIS BSPP
 RINGNIPPEL FÜR HOHLSCHRAUBE BSP/RNR
 BANJO BSPP



Code	Tube			Thread	Dimensions			Pressure	
	D.N.	Hose	Diam		D	S	A	Bar	Psi
	Inch	mm	Inch		mm	mm	mm		
OG0302	-3	3/16"	4.8	1/8"	10	10	19.5		
OG0304	-3	3/16"	4.8	1/4"	13.2	14	22.5		
OG0402	-4	1/4"	6.4	1/8"	10	10	24		
OG0404	-4	1/4"	6.4	1/4"	13.2	14	23		
OG0406	-4	1/4"	6.4	3/8"	16.7	17	26.5		
OG0408	-4	1/4"	6.4	1/2"	21	22	32.5		
OG0504	-5	5/16"	7.9	1/4"	13.2	14	24		
OG0506	-5	5/16"	7.9	3/8"	16.7	17	26.5		
OG0508	-5	5/16"	7.9	1/2"	21	22	27.5		
OG0604	-6	3/8"	9.5	1/4"	13.2	14	31.5		
OG0606	-6	3/8"	9.5	3/8"	16.7	17	26.5		
OG0608	-6	3/8"	9.5	1/2"	21	22	27.5		
OG0806	-8	1/2"	12.8	3/8"	16.7	17	31		
OG0808	-8	1/2"	12.8	1/2"	21	22	33		
OG0810	-8	1/2"	12.8	5/8"	23.3	24	32.5		
OG0812	-8	1/2"	12.8	3/4"	26.5	30	34.5		

BSP BANJO (2)

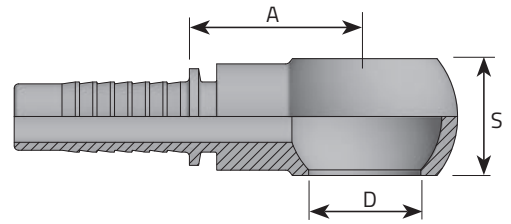
OCCHIO BSP
 BANJO VIS BSPP
 RINGNIPPEL FÜR HOHLSCHRAUBE BSP/RNR
 BANJO BSPP



Code	Tube		Thread	Dimensions			Pressure		
	D.N.	Hose		Diam	D	S	A	Bar	Psi
	Inch		mm	Inch	mm	mm	mm		
OG1008	-10	5/8"	16	1/2"	21	22	31.5		
OG1010	-10	5/8"	16	5/8"	23.3	24	32.5		
OG1012	-10	5/8"	16	3/4"	26.5	30	34.5		
OG1212	-12	3/4"	19	3/4"	26.5	30	35		
OG1216	-12	3/4"	19	1"	33.4	38	48		
OG1612	-16	1"	25.4	3/4"	-	-	-		
OG1616	-16	1"	25.4	1"	33.4	38	43		
OG2020	-20	1.1/4"	31.8	1.1/4"	42.1	47	57.7		

METRIC BANJO (1)

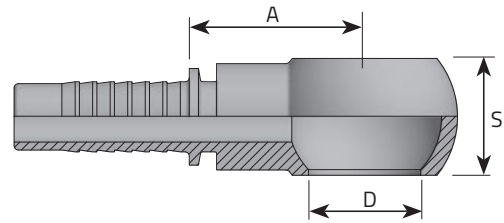
OCCHIO METRICO
 BANJO VIS MÉTRIQUE
 RINGNIPPEL FÜR HOHLSCHRAUBE METRISCH/RNM
 BANJO MÉTRICO



Code	Tube			Thread	Dimensions			Pressure	
	D.N.	Hose	Diam		D	S	A	Bar	Psi
		Inch	mm		mm	mm	mm		
OM0310	-3	3/16"	4.8	M10 x 1	10.1	10	19.5		
OM0312	-3	3/16"	4.8	M12 x 1.5	12.1	12	21		
OM0314	-3	3/16"	4.8	M14 x 1.5	14.1	14	23		
OM0410	-4	1/4"	6.4	M10 x 1	10.1	10	24		
OM0412	-4	1/4"	6.4	M12 x 1.5	12.1	11	23		
OM0414	-4	1/4"	6.4	M14 x 1.5	14.1	14	23		
OM0416	-4	1/4"	6.4	M16 x 1.5	16.1	17	25		
OM0418	-4	1/4"	6.4	M18 x 1.5	18.1	20	29		
OM0512	-5	5/16"	7.9	M12 x 1.5	12.1	12	23		
OM0514	-5	5/16"	7.9	M14 x 1.5	14.1	14	24.5		
OM0516	-5	5/16"	7.9	M16 x 1.5	16.1	17	27		
OM0518	-5	5/16"	7.9	M18 x 1.5	18.1	20	29		
OM0520	-5	5/16"	7.9	M20 x 1.5	20.1	22	28		
OM0522	-5	5/16"	7.9	M22 x 1.5	22.1	22	28		
OM0614	-6	3/8"	9.5	M14 x 1.5	14.1	14	27		
OM0616	-6	3/8"	9.5	M16 x 1.5	16.1	17	27		

METRIC BANJO (2)

OCCHIO METRICO
BANJO VIS MÉTRIQUE
 RINGNIPPEL FÜR HOHLSCHRAUBE METRISCH/RNM
BANJO MÉTRICO



Code	Tube		Thread	Dimensions			Pressure		
	D.N.	Hose		Diam	D	S	A	Bar	Psi
		Inch	mm	mm	mm	mm	mm		
OM0618	-6	3/8"	9.5	M18 x 1.5	18.1	20	28		
OM0620	-6	3/8"	9.5	M20 x 1.5	20.1	22	28.5		
OM0622	-6	3/8"	9.5	M22 x 1.5	22.1	22	28.5		
OM0818	-8	1/2"	12.8	M18 x 1.5	18.1	20	30		
OM0820	-8	1/2"	12.8	M20 x 1.5	20.1	22	34		
OM0822	-8	1/2"	12.8	M22 x 1.5	22.1	22	34		
OM0826	-8	1/2"	12.8	M26 x 1.5	26.5	30	34.5		
OM1022	-10	5/8"	16	M22 x 1.5	22.1	22	34		
OM1026	-10	5/8"	16	M26 x 1.5	26.5	30	34.5		
OM1226	-12	3/4"	19	M26 x 1.5	26.5	30	35		
OM1230	-12	3/4"	19	M30 x 1.5	30.1	36	41.5		
OM1630	-16	1"	25.4	M30 x 1.5	30.1	36	41.5		