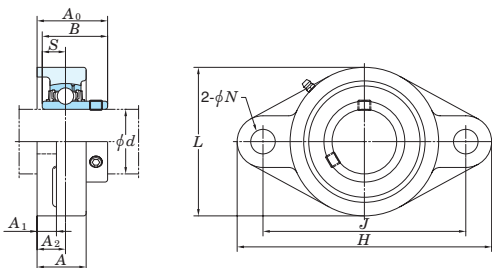
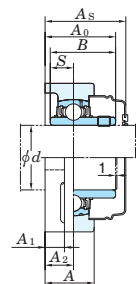


Ball bearing units
rhombic-flanged type
UCFL (with set screws)

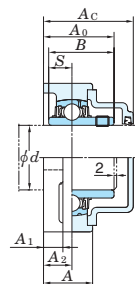
d 12 ~ 55 mm



Pressed steel cover



Cast iron cover



Tolerances for housing

housing No.			ΔN_s	housing No.			ΔA_{2s}	<i>X</i>
FL204-FL218	FLX05-FLX10	FL305-FL311	± 0.2	FL204-FL210	FLX05-FLX10	FL305-FL310	± 0.5	0.7
		FL312-FL328	± 0.3	FL211-FL218		FL311-FL328	± 0.8	1

ΔN_s : deviation of bolt hole diameter.

ΔA_{2s} : deviation of distance from mounting face to centre of spherical bearing seating.

FL204JE3, FL205JE3 (with cast iron covers) are shown below.

FL204JE3 $L_c = 65$ mm
FL205JE3 $L_c = 73$ mm



X : positional tolerance of bolt hole.

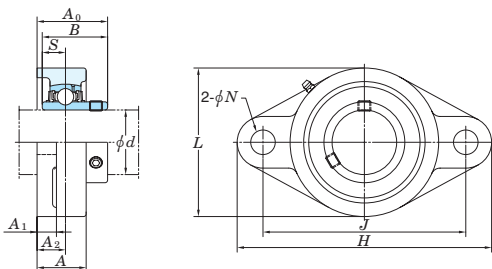
Shaft dia. (mm) <i>d</i>	Dimensions (mm)										Bolt size	Unit No.	Housing No.	Applicable bearing			Unit No. with covers				Cover dimensions (mm)		(Refer.) Unit mass (kg)	
	<i>H</i>	<i>L</i>	<i>A</i>	<i>J</i>	<i>N</i>	<i>A</i> ₁	<i>A</i> ₂	<i>A</i> ₀	<i>B</i>	<i>S</i>				No.	Basic load ratings (kN) <i>C</i> _r <i>C</i> _{0r}	Factor <i>f</i> ₀	Pressed steel covers Open ends Closed end		Cast iron covers Open ends Closed end		<i>A</i> _s	<i>A</i> _c	Pressed steel covers	Cast iron covers
12	113	60	25.5	90	12	11	15	33.3	31	12.7	M10	UCFL201	FL204	UC201	12.8 6.65	13.2	UCFL201C	UCFL201D	—	—	37	—	0.50	—
15	113	60	25.5	90	12	11	15	33.3	31	12.7	M10	UCFL202	FL204	UC202	12.8 6.65	13.2	UCFL202C	UCFL202D	—	—	37	—	0.48	—
17	113	60	25.5	90	12	11	15	33.3	31	12.7	M10	UCFL203	FL204	UC203	12.8 6.65	13.2	UCFL203C	UCFL203D	—	—	37	—	0.47	—
20	113	60	25.5	90	12	11	15	33.3	31	12.7	M10	UCFL204	FL204	UC204	12.8 6.65	13.2	UCFL204C	UCFL204D	UCFL204FC	UCFL204FD	37	46	0.45	0.60
25	130	68	27	99	16	13	16	35.8	34.1	14.3	M14	UCFL205	FL205	UC205	14.0 7.85	13.9	UCFL205C	UCFL205D	UCFL205FC	UCFL205FD	40	49	0.64	0.83
	141	83	30	117	12	13	18	40.2	38.1	15.9	M10	UCFLX05	FLX05	UCX05	19.5 11.3	13.9	UCFLX05C	UCFLX05D	—	—	44	—	1.1	—
	150	80	29	113	19	13	16	39	38	15	M16	UCFL305	FL305	UC305	21.2 10.9	12.6	—	—	UCFL305C	UCFL305D	—	54	1.1	1.4
30	148	80	31	117	16	13	18	40.2	38.1	15.9	M14	UCFL206	FL206	UC206	19.5 11.3	13.9	UCFL206C	UCFL206D	UCFL206FC	UCFL206FD	44	53	0.93	1.2
	156	95	34	130	16	14	19	44.4	42.9	17.5	M14	UCFLX06	FLX06	UCX06	25.7 15.4	13.9	UCFLX06C	UCFLX06D	—	—	49	—	1.5	—
	180	90	32	134	23	15	18	44	43	17	M20	UCFL306	FL306	UC306	26.7 15.0	13.3	—	—	UCFL306C	UCFL306D	—	59	1.5	1.8
35	161	90	34	130	16	14	19	44.4	42.9	17.5	M14	UCFL207	FL207	UC207	25.7 15.4	13.9	UCFL207C	UCFL207D	UCFL207FC	UCFL207FD	49	58	1.2	1.6
	171	105	38	144	16	14	21	51.2	49.2	19	M14	UCFLX07	FLX07	UCX07	29.1 17.8	14.0	UCFLX07C	UCFLX07D	—	—	55	—	1.9	—
	185	100	36	141	23	16	20	49	48	19	M20	UCFL307	FL307	UC307	33.4 19.3	13.2	—	—	UCFL307C	UCFL307D	—	64	1.8	2.2
40	175	100	36	144	16	14	21	51.2	49.2	19	M14	UCFL208	FL208	UC208	29.1 17.8	14.0	UCFL208C	UCFL208D	UCFL208FC	UCFL208FD	55	64	1.6	2.0
	179	111	40	148	16	14	22	52.2	49.2	19	M14	UCFLX08	FLX08	UCX08	32.7 20.3	14.0	UCFLX08C	UCFLX08D	—	—	56	—	2.1	—
	200	112	40	158	23	17	23	56	52	19	M20	UCFL308	FL308	UC308	40.7 24.0	13.2	—	—	UCFL308C	UCFL308D	—	71	2.5	3.0
45	188	108	38	148	19	15	22	52.2	49.2	19	M16	UCFL209	FL209	UC209	32.7 20.3	14.0	UCFL209C	UCFL209D	UCFL209FC	UCFL209FD	56	66	1.9	2.3
	189	116	40	157	16	14	23	55.6	51.6	19	M14	UCFLX09	FLX09	UCX09	35.1 23.3	14.4	UCFLX09C	UCFLX09D	—	—	60	—	2.4	—
	230	125	44	177	25	18	25	60	57	22	M22	UCFL309	FL309	UC309	48.9 29.5	13.3	—	—	UCFL309C	UCFL309D	—	76	3.5	4.1
50	197	115	40	157	19	15	22	54.6	51.6	19	M16	UCFL210	FL210	UC210	35.1 23.3	14.4	UCFL210C	UCFL210D	UCFL210FC	UCFL210FD	59	70.5	2.2	2.7
	216	133	44	184	19	20	26	59.4	55.6	22.2	M16	UCFLX10	FLX10	UCX10	43.4 29.4	14.4	UCFLX10C	UCFLX10D	—	—	64	—	3.8	—
	240	140	48	187	25	19	28	67	61	22	M22	UCFL310	FL310	UC310	62.0 38.3	13.2	—	—	UCFL310C	UCFL310D	—	83	4.4	5.2
55	224	130	43	184	19	18	25	58.4	55.6	22.2	M16	UCFL211	FL211	UC211	43.4 29.4	14.4	UCFL211C	UCFL211D	UCFL211FC	UCFL211FD	63	74.5	3.3	3.9
	250	150	52	198	25	20	30	71	66	25	M22	UCFL311	FL311	UC311	71.6 45.0	13.2	—	—	UCFL311C	UCFL311D	—	87	5.3	6.2

[Remarks] 1) Applicable sizes of grease nipples are shown below.
A-1/4-28UNF 201~210, X05~X09, 305~308
A-PT 1/8 211~217, X10~X17, 309~328

2) Bearings with triple-lip seals are indicated by L3 after the bearing and unit number.
(UCFS307JL3, UC307L3)
3) For more detailed information, refer to ball bearing for unit specification tables.

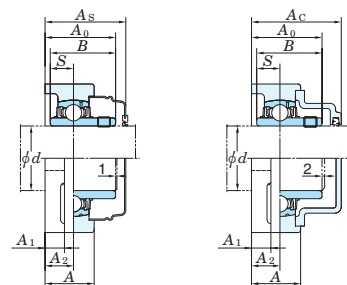
Ball bearing units
rhombic-flanged type
UCFL (with set screws)

d 60 ~ 140 mm



Pressed steel cover

Cast iron cover



Tolerances for housing

housing No.			ΔN_s	housing No.			ΔA_{2s}	X
FL204-FL216	FLX05-FLX10	FL305-FL311	± 0.2	FL204-FL210	FLX05-FLX10	FL305-FL310	± 0.5	0.7
		FL312-FL328	± 0.3	FL211-FL218		FL311-FL328	± 0.8	1

ΔN_s : deviation of bolt hole diameter.

ΔA_{2s} : deviation of distance from mounting face to centre of spherical bearing seating.

X : positional tolerance of bolt hole.

Shaft dia. (mm) <i>d</i>	Dimensions (mm)										Bolt size	Unit No.	Housing No.	Applicable bearing			Unit No. with covers				Cover dimensions (mm)		(Refer.) Unit mass (kg)			
	<i>H</i>	<i>L</i>	<i>A</i>	<i>J</i>	<i>N</i>	<i>A</i> ₁	<i>A</i> ₂	<i>A</i> ₀	<i>B</i>	<i>S</i>				No.	Basic load ratings (kN) <i>C_r</i>	<i>C</i> _{0r}	Factor <i>f</i> ₀	Pressed steel covers Open ends Closed end		Cast iron covers Open ends Closed end		<i>A</i> _s	<i>A</i> _c	Pressed steel covers	Cast iron covers	
60	250	140	48	202	23	18	29	68.7	65.1	25.4	M20	UCFL212 UCFL312	FL212 FL312		UC212 UC312	52.4 81.9	36.2 52.2	14.4 13.2	UCFL212C	UCFL212D	UCFL212FC	UCFL212FD	73	86	4.2	5.0
	270	160	56	212	31	22	33	78	71	26	M27								—	—	UCFL312C	UCFL312D	—	95	6.5	7.7
65	258	155	50	210	23	20	30	69.7	65.1	25.4	M20	UCFL213 UCFL313	FL213 FL313		UC213 UC313	57.2 92.7	40.1 59.9	14.4 13.2	UCFL213C	UCFL213D	UCFL213FC	UCFL213FD	74	87	5.1	5.9
	295	175	58	240	31	25	33	78	75	30	M27								—	—	UCFL313C	UCFL313D	—	94	8.5	9.6
70	265	160	54	216	23	20	31	75.4	74.6	30.2	M20	UCFL214 UCFL314	FL214 FL314		UC214 UC314	62.2 104	44.1 68.2	14.5 13.2	UCFL214C	UCFL214D	UCFL214FC	UCFL214FD	80	93	5.7	6.6
	315	185	61	250	35	28	36	81	78	33	M30								—	—	UCFL314C	UCFL314D	—	98	9.7	10.8
75	275	165	56	225	23	20	34	78.5	77.8	33.3	M20	UCFL215 UCFL315	FL215 FL315		UC215 UC315	67.4 113	48.3 77.2	14.5 13.2	UCFL215C	UCFL215D	UCFL215FC	UCFL215FD	83	96	6.4	7.4
	320	195	66	260	35	30	39	89	82	32	M30								—	—	UCFL315C	UCFL315D	—	106	11.3	12.6
80	290	180	58	233	25	20	34	83.3	82.6	33.3	M22	UCFL216 UCFL316	FL216 FL316		UC216 UC316	72.7 123	53.0 86.7	14.6 13.3	UCFL216C	UCFL216D	UCFL216FC	UCFL216FD	88	103	7.8	9.0
	355	210	68	285	38	32	38	90	86	34	M33								—	—	UCFL316C	UCFL316D	—	107	14.4	15.8
85	305	190	63	248	25	22	36	87.6	85.7	34.1	M22	UCFL217 UCFL317	FL217 FL317		UC217 UC317	84.0 133	61.9 96.8	14.5 13.3	UCFL217C	UCFL217D	UCFL217FC	UCFL217FD	92	107	9.8	11.2
	370	220	74	300	38	32	44	100	96	40	M33								—	—	UCFL317C	UCFL317D	—	117	16.0	17.6
90	320	205	68	265	25	23	40	96.3	96	39.7	M22	UCFL218 UCFL318	FL218 FL318		UC218 UC318	96.1 143	71.5 107	14.5 13.3	UCFL218C	UCFL218D	UCFL218FC	UCFL218FD	101	116	12.3	13.8
	385	235	76	315	38	36	44	100	96	40	M33								—	—	UCFL318C	UCFL318D	—	119	19.0	20.9
95	405	250	94	330	41	40	59	121	103	41	M36	UCFL319	FL319		UC319	153	119	13.3	—	—	UCFL319C	UCFL319D	—	140	24.6	26.8
100	440	270	94	360	44	40	59	125	108	42	M39	UCFL320	FL320		UC320	173	141	13.2	—	—	UCFL320C	UCFL320D	—	146	29.4	32.2
105	440	270	94	360	44	40	59	127	112	44	M39	UCFL321	FL321		UC321	184	153	13.2	—	—	UCFL321C	UCFL321D	—	148	34.4	37.4
110	470	300	96	390	44	42	60	131	117	46	M39	UCFL322	FL322		UC322	205	180	13.2	—	—	UCFL322C	UCFL322D	—	154	36.2	39.6
120	520	330	110	430	47	48	65	140	126	51	M42	UCFL324	FL324		UC324	207	185	13.5	—	—	UCFL324C	UCFL324D	—	163	51.6	56.4
130	550	360	115	460	47	50	65	146	135	54	M42	UCFL326	FL326		UC326	229	214	13.6	—	—	UCFL326C	UCFL326D	—	172	61.6	67.7
140	600	400	125	500	51	60	75	161	145	59	M45	UCFL328	FL328		UC328	253	246	13.6	—	—	UCFL328C	UCFL328D	—	186	68.4	76.1

(Remarks) 1) Applicable sizes of grease nipples are shown below.
A-1/4-28UNF 201~210, X05~X09, 305~308
A-PT 1/8 211~217, X10~X17, 309~328

2) Bearings with triple-lip seals are indicated by L3 after the bearing and unit number.
(UCFS307JL3, UC307L3)
3) For more detailed information, refer to ball bearing for unit specification tables.