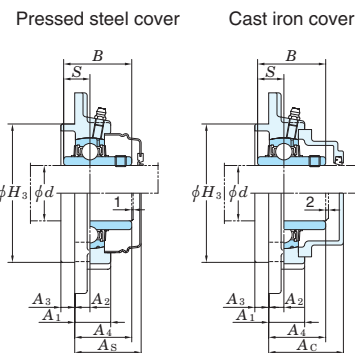
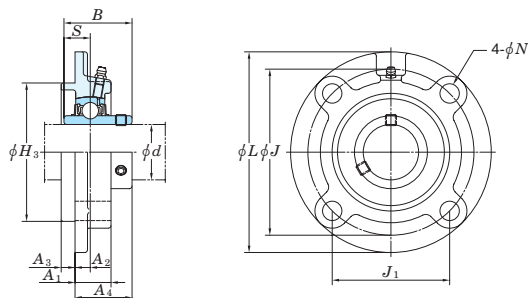


Ball bearing units
round-flanged type with spigot joint
UCFC (with set screws)

d 12 ~ 65 mm



Tolerances for housing

unit : mm

housing No.	ΔH_{3s}	ΔA_{2s}	X	Y
FC204-FC206	FCX05 0 -0.046	±0.5	0.7	0.2
FC207-FC210	FCX06-FCX10 0 -0.054			
FC211-FC217	FCX11-FCX15 0 -0.063	±0.8	1	0.3
FC218	FCX16-FCX18 0 -0.072			
	FCX20			

ΔH_{3s} : deviation of spigot joint outside diameter.
 ΔA_{2s} : deviation of distance from mounting face to centre of spherical bearing seating.
 X : positional tolerance of bolt hole.
 Y : circumferential runout tolerance of spigot joint in respect to axial line of spherical bearing seating.

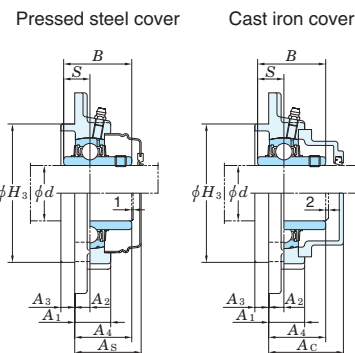
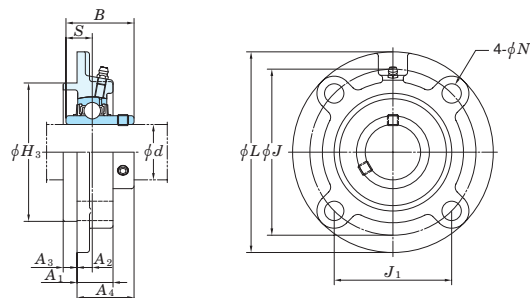
Shaft dia. (mm)	Dimensions (mm)												Bolt size	Unit No.	Housing No.	Applicable bearing			Unit No. with covers				Cover dimensions (mm)		(Refer.) Unit Mass (kg)		
	<i>d</i>	<i>L</i>	<i>H</i> ₃	<i>J</i>	<i>J</i> ₁	<i>N</i> ±0.2	<i>A</i> ₁	<i>A</i> ₂	<i>A</i> ₃	<i>A</i> ₄	<i>B</i>	<i>S</i>				No.	Basic load ratings (kN)		Factor <i>f</i> ₀	Pressed steel covers		Cast iron covers		<i>A</i> _s	<i>A</i> _c	Pressed steel covers	Cast iron covers
																	<i>C</i> _r	<i>C</i> _{0r}		Open ends	Closed end	Open ends	Closed end				
12	100	62	78	55.1	12	20.5	10	5	28.3	31	12.7	M10	UCFC201	FC204	UC201	12.8	6.65	13.2	UCFC201C	UCFC201D	—	—	32	—	0.78	—	
	15	100	62	78	55.1	12	20.5	10	5	28.3	31	12.7	M10	UCFC202	FC204	UC202	12.8	6.65	13.2	UCFC202C	UCFC202D	—	—	32	—	0.76	—
17	100	62	78	55.1	12	20.5	10	5	28.3	31	12.7	M10	UCFC203	FC204	UC203	12.8	6.65	13.2	UCFC203C	UCFC203D	—	—	32	—	0.75	—	
	20	100	62	78	55.1	12	20.5	10	5	28.3	31	12.7	M10	UCFC204	FC204	UC204	12.8	6.65	13.2	UCFC204C	UCFC204D	UCFC204FC	UCFC204FD	32	38.5	0.73	0.84
25	115	70	90	63.6	12	21	10	6	29.8	34.1	14.3	M10	UCFC205	FC205	UC205	14.0	7.85	13.9	UCFC205C	UCFC205D	UCFC205FC	UCFC205FD	34	42	0.95	1.1	
	111	76	92	65	9.5	24	10	6	32.2	38.1	15.9	M8	UCFCX05	FCX05	UCX05	19.5	11.3	13.9	UCFCX05C	UCFCX05D	—	—	36	—	1.2	—	
30	125	80	100	70.7	12	23	10	8	32.2	38.1	15.9	M10	UCFC206	FC206	UC206	19.5	11.3	13.9	UCFC206C	UCFC206D	UCFC206FC	UCFC206FD	36	45	1.3	1.6	
	127	85	105	74.2	12	22.5	8	9.5	33.4	42.9	17.5	M10	UCFCX06	FCX06	UCX06	25.7	15.4	13.9	UCFCX06C	UCFCX06D	—	—	38	—	1.5	—	
35	135	90	110	77.8	14	26	11	8	36.4	42.9	17.5	M12	UCFC207	FC207	UC207	25.7	15.4	13.9	UCFC207C	UCFC207D	UCFC207FC	UCFC207FD	41	50	1.7	2.1	
	133	92	111	78.5	12	26	9	11	39.2	49.2	19	M10	UCFCX07	FCX07	UCX07	29.1	17.8	14.0	UCFCX07C	UCFCX07D	—	—	43	—	1.9	—	
40	145	100	120	84.8	14	26	11	10	41.2	49.2	19	M12	UCFC208	FC208	UC208	29.1	17.8	14.0	UCFC208C	UCFC208D	UCFC208FC	UCFC208FD	45	54	2.0	2.4	
	133	92	111	78.5	12	26	9	11	39.2	49.2	19	M10	UCFCX08	FCX08	UCX08	32.7	20.3	14.0	UCFCX08C	UCFCX08D	—	—	43	—	2.0	—	
45	160	105	132	93.3	16	26	10	12	40.2	49.2	19	M14	UCFC209	FC209	UC209	32.7	20.3	14.0	UCFC209C	UCFC209D	UCFC209FC	UCFC209FD	44	54	2.6	3.0	
	155	108	130	91.9	14	25	8	12	40.6	51.6	19	M12	UCFCX09	FCX09	UCX09	35.1	23.3	14.4	UCFCX09C	UCFCX09D	—	—	45	—	2.6	—	
50	165	110	138	97.6	16	28	10	12	42.6	51.6	19	M14	UCFC210	FC210	UC210	35.1	23.3	14.4	UCFC210C	UCFC210D	UCFC210FC	UCFC210FD	47	58.5	2.9	3.4	
	162	118	136	96.2	14	25	7	16	40.4	55.6	22.2	M12	UCFCX10	FCX10	UCX10	43.4	29.4	14.4	UCFCX10C	UCFCX10D	—	—	45	—	3.2	—	
55	185	125	150	106.1	19	31	13	12	46.4	55.6	22.2	M16	UCFC211	FC211	UC211	43.4	29.4	14.4	UCFC211C	UCFC211D	UCFC211FC	UCFC211FD	51	62.5	4.2	4.8	
	180	127	152	107.5	16	26	4	22	43.7	65.1	25.4	M14	UCFCX11	FCX11	UCX11	52.4	36.2	14.4	UCFCX11C	UCFCX11D	—	—	48	—	4.3	—	
60	195	135	160	113.1	19	36	17	12	56.7	65.1	25.4	M16	UCFC212	FC212	UC212	52.4	36.2	14.4	UCFC212C	UCFC212D	UCFC212FC	UCFC212FD	61	74	5.0	5.8	
	194	140	165	116.7	16	33	11	20	50.7	65.1	25.4	M14	UCFCX12	FCX12	UCX12	57.2	40.1	14.4	UCFCX12C	UCFCX12D	—	—	55	—	5.3	—	
65	205	145	170	120.2	19	36	16	14	55.7	65.1	25.4	M16	UCFC213	FC213	UC213	57.2	40.1	14.4	UCFC213C	UCFC213D	UCFC213FC	UCFC213FD	60	73	5.6	6.4	
	194	140	165	116.7	16	33	11	20	55.4	74.6	30.2	M14	UCFCX13	FCX13	UCX13	62.2	44.1	14.5	UCFCX13C	UCFCX13D	—	—	60	—	5.7	—	

(Remarks) 1) Applicable sizes of grease nipples are shown below.
 A-1/4-28UNF..... 201~210, X05~X09
 A-PT 1/8..... 211~218, X10~X20

2) For bearings with double- or triple-lip seals, unit and bearing number are suffixed by L2 or L3.
 (UCFC206JL3, UC206L3)
 3) For more detailed information, refer to ball bearing for unit specification tables.

Ball bearing units
round-flanged type with spigot joint
UCFC (with set screws)

d 70 ~ 100 mm



Tolerances for housing

unit : mm

housing No.	ΔH_{3s}	ΔA_{2s}	X	Y
FC204-FC206	FCX05 0 -0.046	±0.5	0.7	0.2
FC207-FC210	FCX06-FCX10 0 -0.054			
FC211-FC217	FCX11-FCX15 0 -0.063	±0.8	1	0.3
FC218	FCX16-FCX18 0 -0.072			0.4
	FCX20			

ΔH_{3s} : deviation of spigot joint outside diameter.
 ΔA_{2s} : deviation of distance from mounting face to centre of spherical bearing seating.
 X : positional tolerance of bolt hole.
 Y : circumferential runout tolerance of spigot joint in respect to axial line of spherical bearing seating.

Shaft dia. (mm) <i>d</i>	Dimensions (mm)												Bolt size	Unit No.	Housing No.	Applicable bearing			Unit No. with covers				Cover dimensions (mm)		Unit Mass (kg)		
	<i>L</i>	<i>H</i> ₃	<i>J</i>	<i>J</i> ₁	<i>N</i> ±0.2	<i>A</i> ₁	<i>A</i> ₂	<i>A</i> ₃	<i>A</i> ₄	<i>B</i>	<i>S</i>	No.				Basic load ratings (kN)		Factor	Pressed steel covers		Cast iron covers		<i>A</i> _s	<i>A</i> _c	Pressed steel covers	Cast iron covers	
	<i>C</i> _r	<i>C</i> _{0r}	<i>f</i> ₀	Open ends	Closed end	Open ends	Closed end																				
70	215	150	177	125.1	19	40	17	14	61.4	74.6	30.2	M16	UCFC214	FC214		UC214	62.2	44.1	14.5	UCFC214C	UCFC214D	UCFC214FC	UCFC214FD	66	79	6.8	7.7
	222	164	190	134.3	19	36	14	20	58.5	77.8	33.3	M16	UCFCX14	FCX14		UCX14	67.4	48.3	14.5	UCFCX14C	UCFCX14D	—	—	63	—	7.3	—
75	220	160	184	130.1	19	40	18	16	62.5	77.8	33.3	M16	UCFC215	FC215		UC215	67.4	48.3	14.5	UCFC215C	UCFC215D	UCFC215FC	UCFC215FD	67	80	7.2	8.2
	222	164	190	134.3	19	35	12	22	61.3	82.6	33.3	M16	UCFCX15	FCX15		UCX15	72.7	53.0	14.6	UCFCX15C	UCFCX15D	—	—	66	—	8.0	—
80	240	170	200	141.4	23	42	18	16	67.3	82.6	33.3	M20	UCFC216	FC216		UC216	72.7	53.0	14.6	UCFC216C	UCFC216D	UCFC216FC	UCFC216FD	72	87	8.7	9.9
	260	186	219	154.8	23	36	10	25	61.6	85.7	34.1	M20	UCFCX16	FCX16		UCX16	84.0	61.9	14.5	UCFCX16C	UCFCX16D	—	—	66	—	11.3	—
85	250	180	208	147.1	23	45	18	18	69.6	85.7	34.1	M20	UCFC217	FC217		UC217	84.0	61.9	14.5	UCFC217C	UCFC217D	UCFC217FC	UCFC217FD	74	89	10.3	11.7
	260	186	219	154.8	23	36	10	25	66.3	96	39.7	M20	UCFCX17	FCX17		UCX17	96.1	71.5	14.5	UCFCX17C	UCFCX17D	—	—	71	—	12.9	—
90	265	190	220	155.5	23	50	22	18	78.3	96	39.7	M20	UCFC218	FC218		UC218	96.1	71.5	14.5	UCFC218C	UCFC218D	UCFC218FC	UCFC218FD	83	98	13.3	14.8
	260	186	219	154.8	23	43	12	28	73.1	104	42.9	M20	UCFCX18	FCX18		UCX18	109	81.9	14.4	—	—	UCFCX18C	UCFCX18D	—	92	13.5	15.4
100	276	206	238	168.3	23	66	22	28	90.3	117.5	49.2	M20	UCFCX20	FCX20		UCX20	133	105	14.4	—	—	UCFCX20C	UCFCX20D	—	116	18.2	20.7

[Remarks] 1) Applicable sizes of grease nipples are shown below.
 A-1/4-28UNF 201~210, X05~X09
 A-PT 1/8 211~218, X10~X20

2) For bearings with double- or triple-lip seals, unit and bearing number are suffixed by L2 or L3.
 (UCFC206JL3, UC206L3)
 3) For more detailed information, refer to ball bearing for unit specification tables.