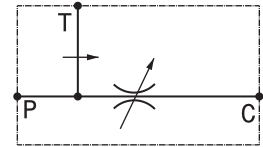
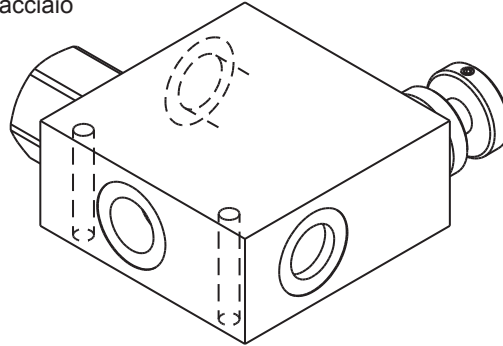
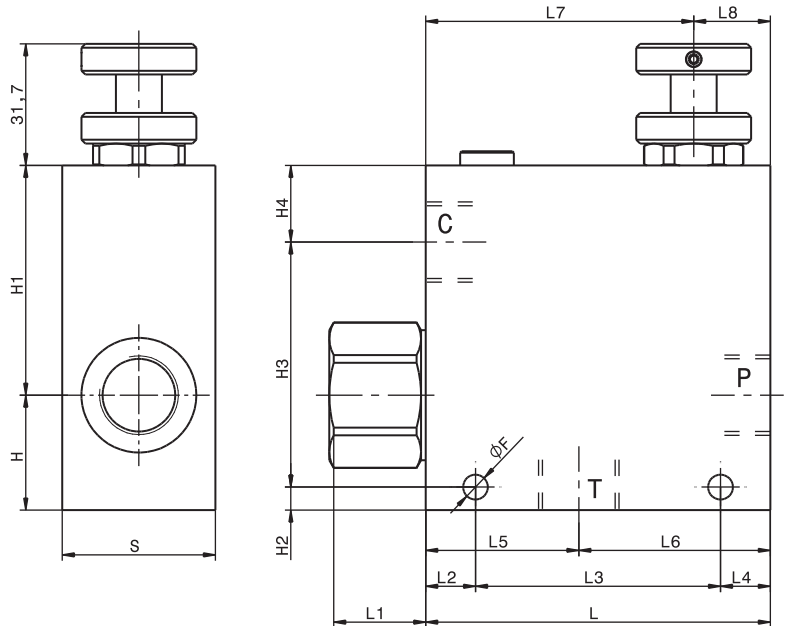


Valvola regolatrice di flusso compensata, tre vie
 3 ways, pressure compensated flow regulator valve
 mod. RF-A

Versione con corpo in alluminio o in acciaio
 Aluminium or steel body version



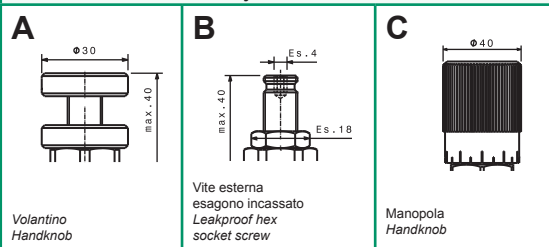
Modello Type	P, C, T	Portata max Max flow		Pressione max Max pressure
		Ingresso Inflow P	Regolata Regulated C	
RF-A-38	3/8" GAS	60 l/min 16 gpm	35 l/min 9 gpm	270 bar 3900 psi
RF-A-12	1/2" GAS	100 l/min 26 gpm	70 l/min 18 gpm	270 bar 3900 psi
RF-A-34	3/4" GAS	150 l/min 40 gpm	90 l/min 24 gpm	270 bar 3900 psi



Dati e tarature ottenuti usando olio con viscosità 30 cSt a 50°C
 Performances and calibrations are carried out by using hydraulic oil with 30 cSt viscosity at 50°C

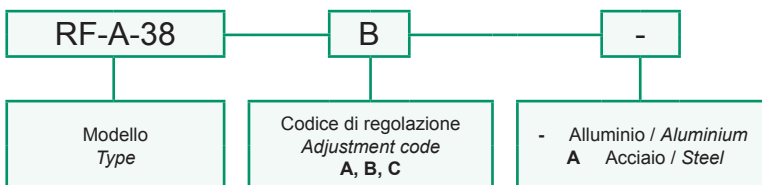
Viscosità consigliate Recommended viscosity	10 ÷ 420 cSt
Temperature di lavoro Working temperature	-20 ÷ +90 °C
Filtrazione assoluta Absolute filtration	25 µ

Regolazioni
Adjustments



Modello Type	L	L1	L2	L3	L4	L5	L6	L7	L8	H	H1	H2	H3	H4	F	S
RF-A-38	90	25	13	64	13	40	50	70	20	30	60	6	67	17	6.5	40
RF-A-12	90	25	13	64	13	40	50	70	20	30	60	6	64	20	6.5	40
RF-A-34	110	34	11	88	11	45	65	83	27	37	73	7	80	23	8.5	50

Sigla di ordinazione / Ordering code



LA VERSIONE G3/4 IN ACCIAIO E' DISPONIBILE SOLO CON ATTACCHI FRONTALI. VEDI RFA34AFA

THE G3 / 4 STEEL VERSION IS AVAILABLE ONLY WITH FRONT ATTACHMENTS. SEE RFA34AFA

For flow diagram see
 CURVES OF COMPENSATION 3 WAYS VALVE (6) +
 CURVES OF COMPENSATION 3 WAYS VALVE (7)

I dati non sono impegnativi, CBF si riserva di apportare modifiche senza preavviso.
 The specifications are not binding, CBF reserves the right to introduce modifications without notice.